

Central Connecticut Rail Study (CCRS)

CTDOT Project # 171-366

Prepared For:

***STATE OF CONNECTICUT
DEPARTMENT OF TRANSPORTATION***

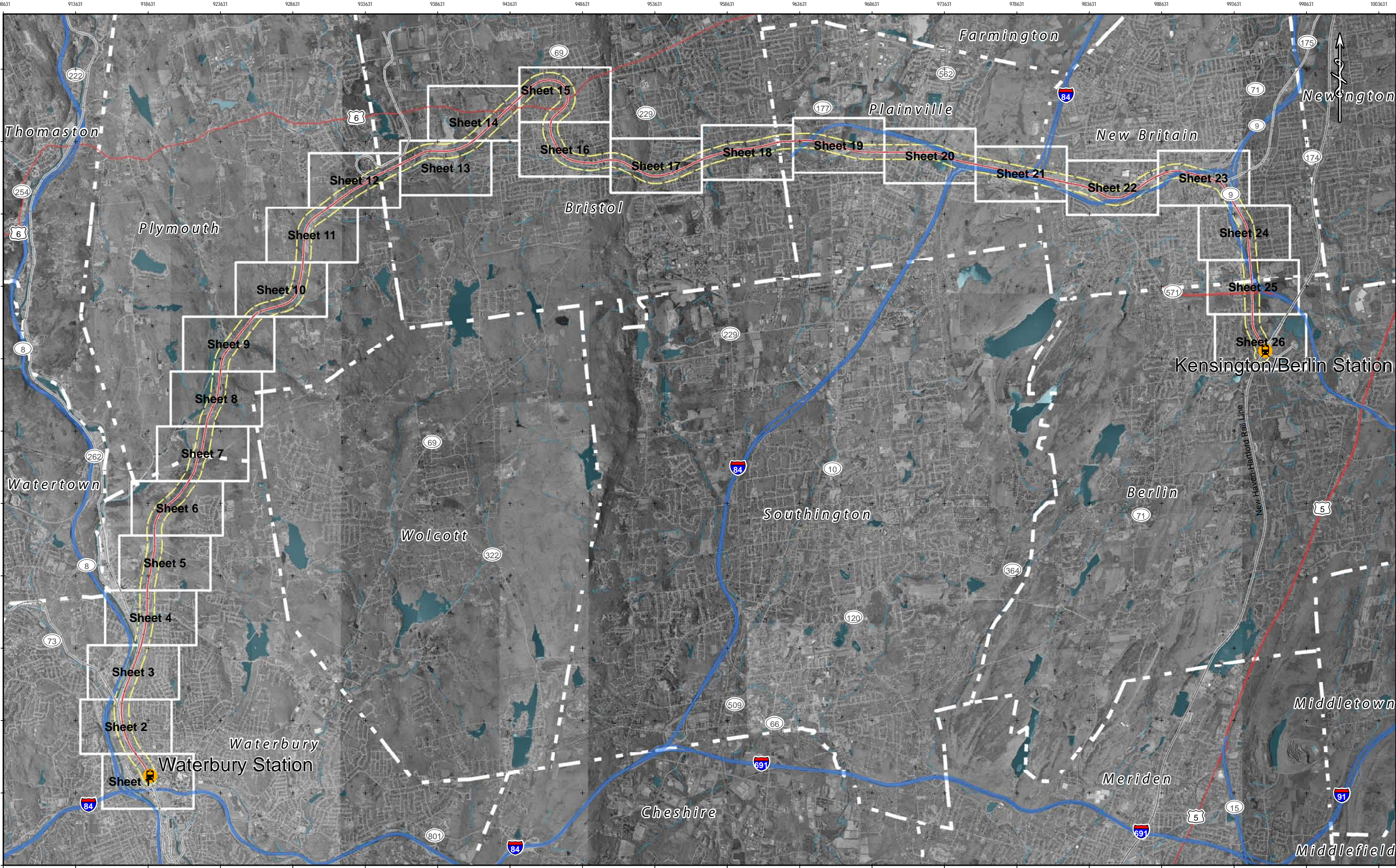


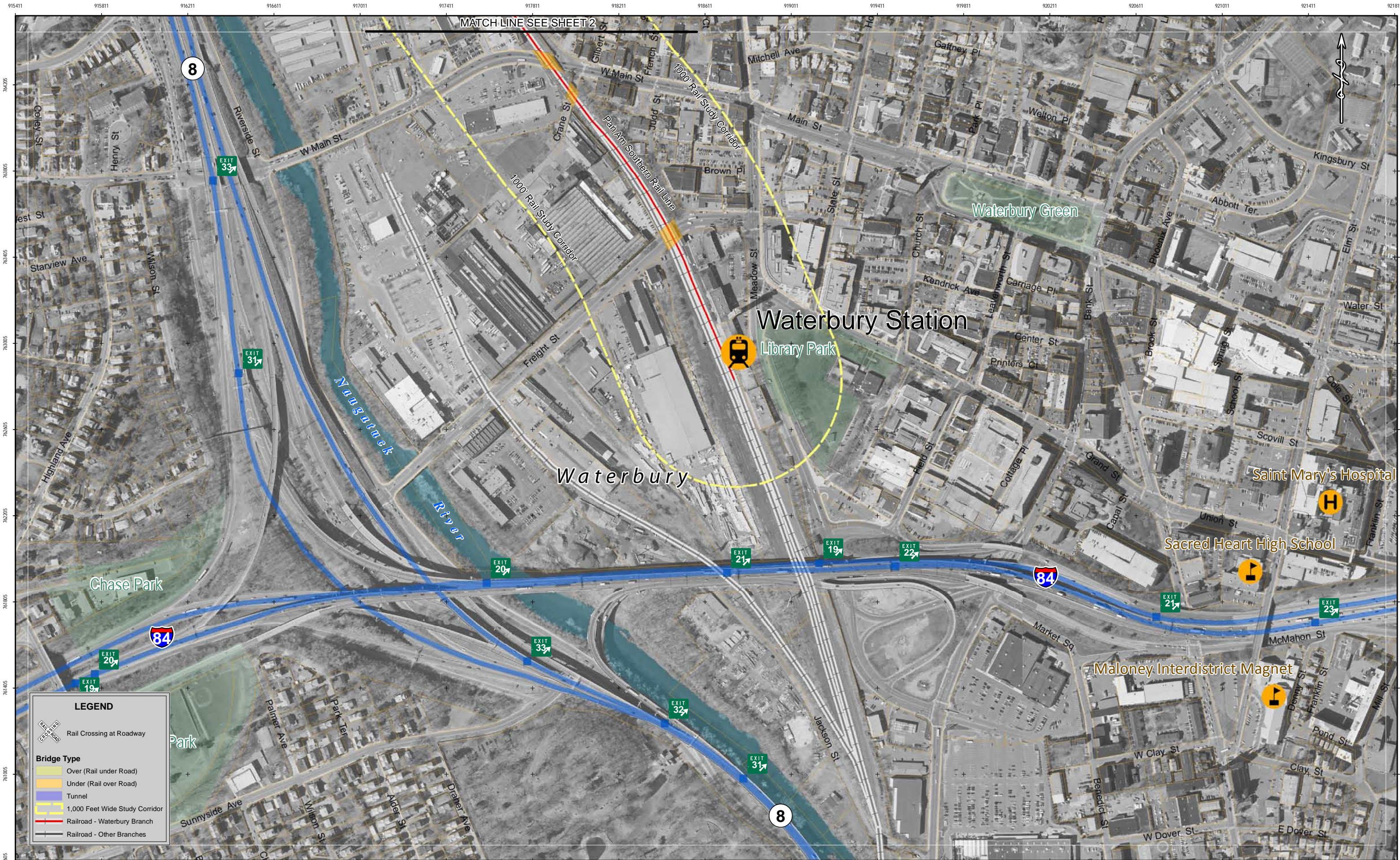
September 2012

Central Connecticut Corridor serving the cities of:
Waterbury, Bristol, New Britain, and Hartford and
adjacent towns of Plainville, Berlin, and Plymouth.

Prepared By:

URS URS CORPORATION AES
Rocky Hill, CT





LEGEND

Rail Crossing at Roadway

Bridge Type

Over (Rail under Road)

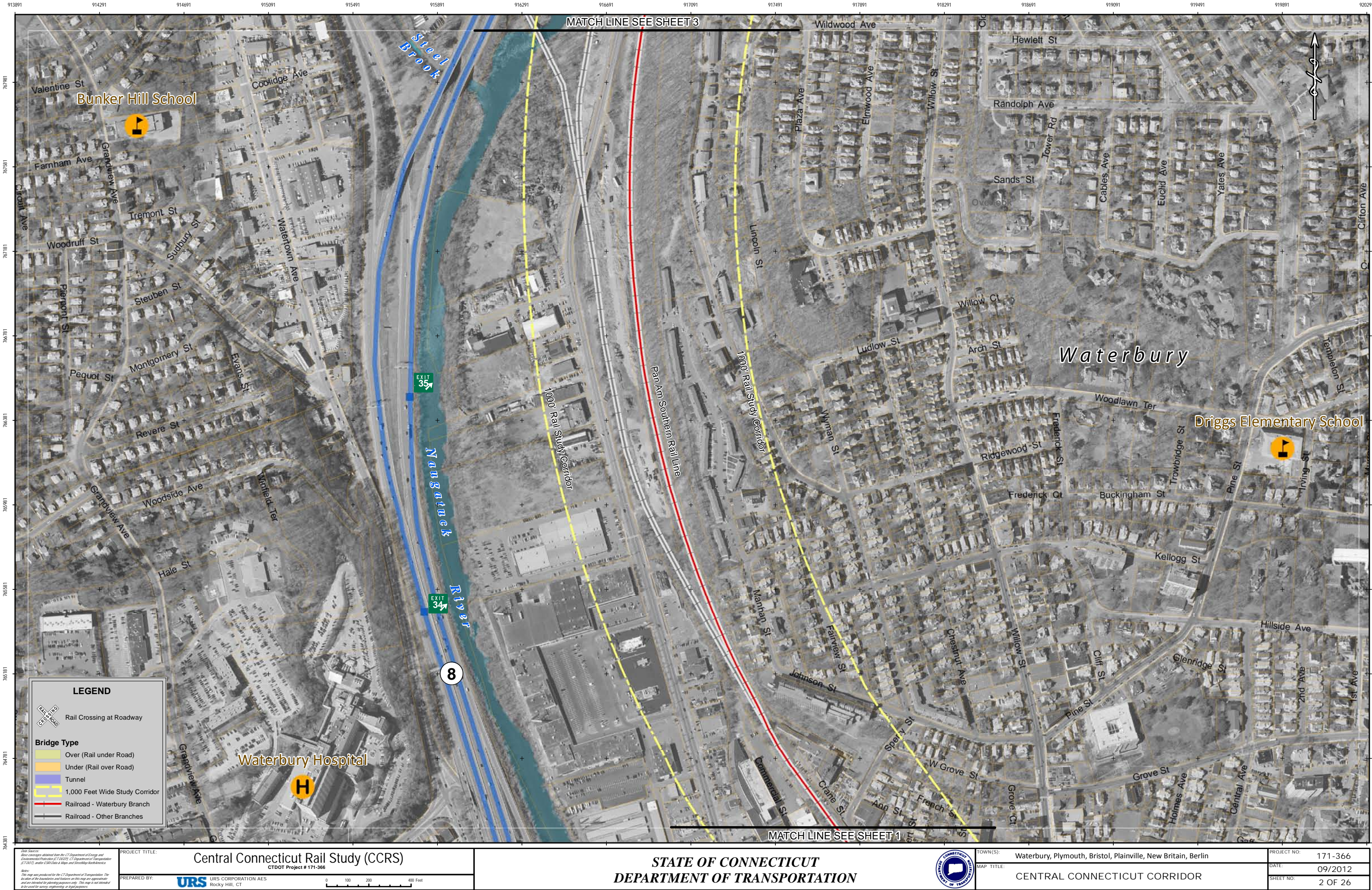
Under (Rail over Road)

Tunnel

1,000 Feet Wide Study Corridor

Railroad - Waterbury Branch

Railroad - Other Branches





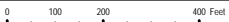
915604 916004 916404 916804 917204 917604 918004 918404 918804 919204 919604 920004 920404 920804 921204 921604 922004





Map Sources:
Aerial coverages obtained from the CT Department of Energy and Environmental Protection (CTDEEP) and the CT Department of Transportation (CTDOT) under ESRI Data & Maps and StreetMap for America.
Notes:
This map was produced for the CT Department of Transportation. The location of the boundaries and features on this map are approximate and are intended for planning purposes only. This map is not intended to be used for surveying, engineering or legal purposes.

PROJECT TITLE:	Central Connecticut Rail Study (CCRS) CTDOT Project # 171-366	
PREPARED BY:	 URS CORPORATION AES Rocky Hill, CT	




STATE OF CONNECTICUT
DEPARTMENT OF TRANSPORTATION



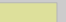
TOWN(S):	Waterbury, Plymouth, Bristol, Plainville, New Britain, Berlin
MAP TITLE:	CENTRAL CONNECTICUT CORRIDOR


PROJECT NO.:	171-366
DATE:	09/2012
SHEET NO.:	5 OF 26


LEGEND

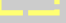
 Rail Crossing at Roadway


Bridge Type

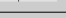
 Over (Rail under Road)

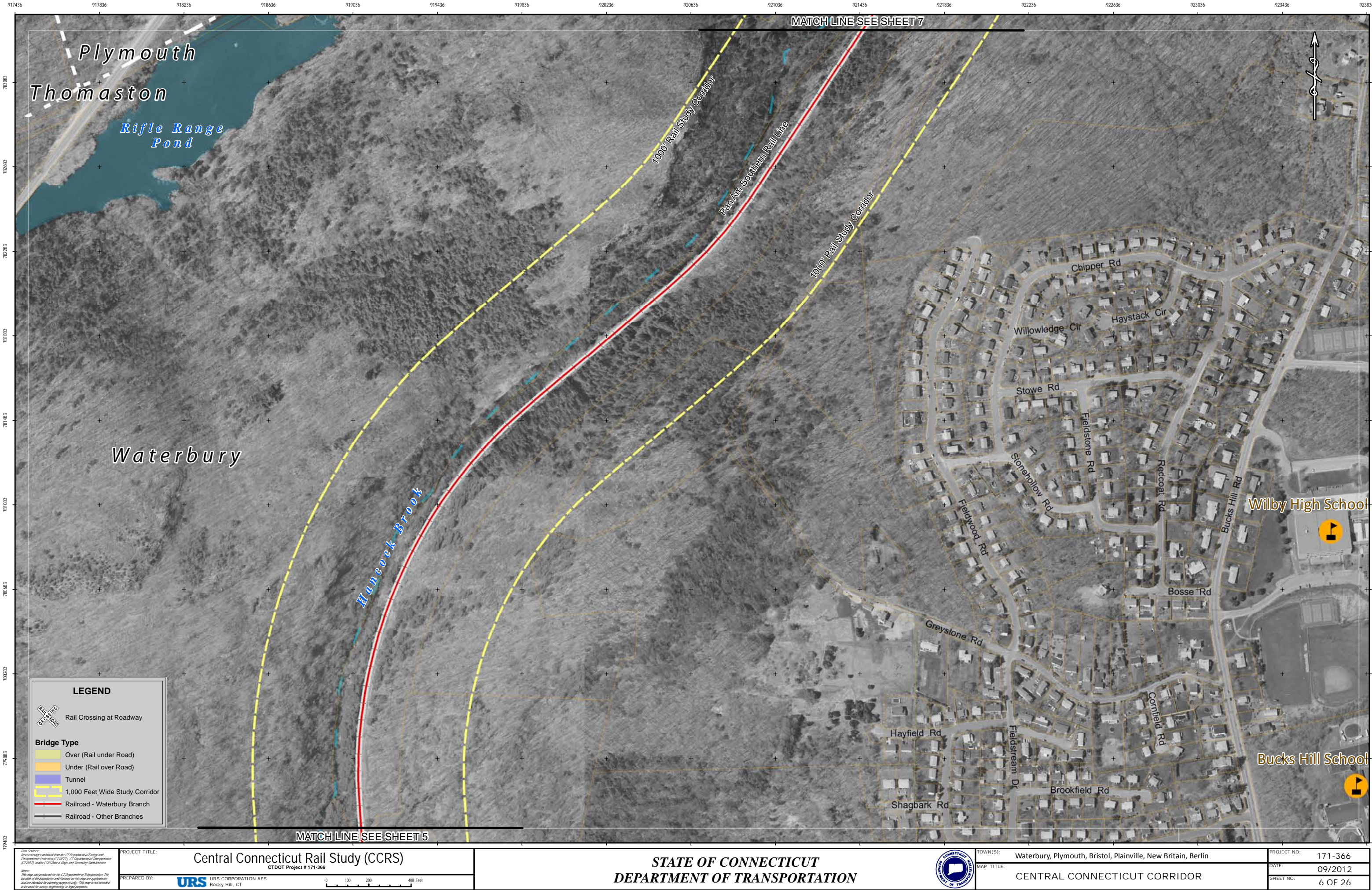
 Under (Rail over Road)

 Tunnel

 1,000 Feet Wide Study Corridor

 Railroad - Waterbury Branch

 Railroad - Other Branches



Map Sources:
Aerial coverages obtained from the CT Department of Energy and Environmental Protection (CT DEEP) CT Department of Transportation (CT DOT) and ESRI Data & Maps and StreetMap North America.
Notes:
This map was produced for the CT Department of Transportation. The location of the boundaries and features on this map are approximate and are intended for planning purposes only. This map is not intended to be used for surveying, engineering or legal purposes.

PROJECT TITLE:	Central Connecticut Rail Study (CCRS) CTDOT Project # 171-366	
PREPARED BY:	 URS CORPORATION AES Rocky Hill, CT	




STATE OF CONNECTICUT
DEPARTMENT OF TRANSPORTATION

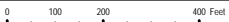


TOWN(S):	Waterbury, Plymouth, Bristol, Plainville, New Britain, Berlin	PROJECT NO.:	171-366
MAP TITLE:	CENTRAL CONNECTICUT CORRIDOR	DATE:	09/2012
		SHEET NO.:	6 OF 26



Map Sources:
Aerial coverages obtained from the CT Department of Energy and Environmental Protection (CT DEEP) CT Department of Transportation (CT DOT) under ESRI Data & Maps and StreetMap North America.
Notes:
This map was produced for the CT Department of Transportation. The location of the boundaries and features on this map are approximate and are intended for planning purposes only. This map is not intended to be used for surveying, engineering or legal purposes.


PROJECT TITLE:	Central Connecticut Rail Study (CCRS) CTDOT Project # 171-366
PREPARED BY:	 URS CORPORATION AES Rocky Hill, CT



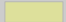


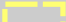

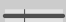
STATE OF CONNECTICUT DEPARTMENT OF TRANSPORTATION
--

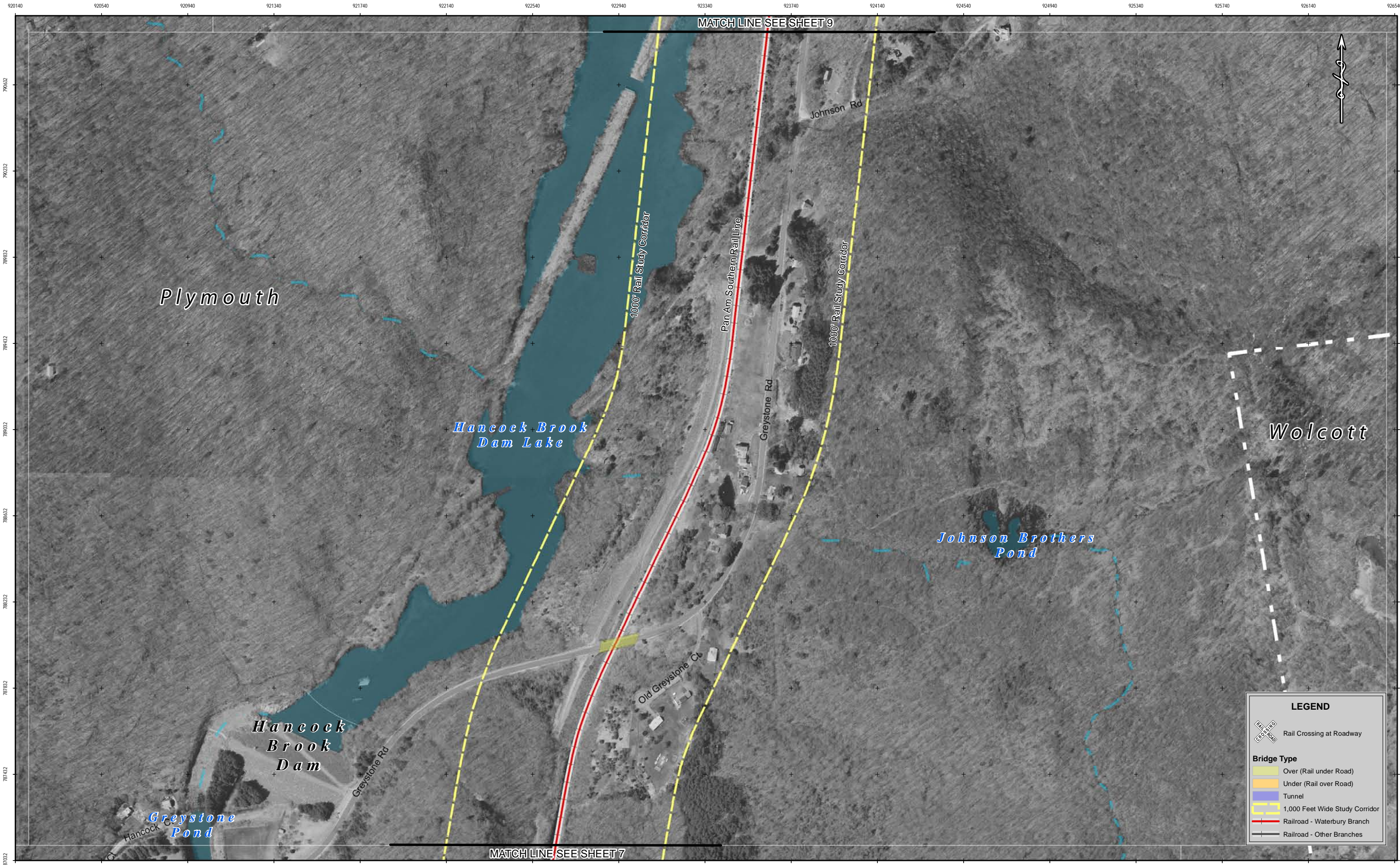


TOWN(S):	Waterbury, Plymouth, Bristol, Plainville, New Britain, Berlin	PROJECT NO.:	171-366
MAP TITLE:	CENTRAL CONNECTICUT CORRIDOR	DATE:	09/2012
		SHEET NO.:	7 OF 26


**LEGEND**

Bridge Type

-  Over (Rail under Road)
-  Under (Rail over Road)
-  Tunnel
-  1,000 Feet Wide Study Corridor
-  Railroad - Waterbury Branch
-  Railroad - Other Branches

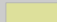


LEGEND


**Railroad**

Rail Crossing at Roadway


Bridge Type



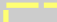
Over (Rail under Road)




Under (Rail over Road)




Tunnel



1,000 Feet Wide Study Corridor




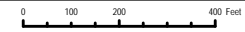
Railroad - Waterbury Branch



Railroad - Other Branches

Map Sources:
Aerial coverages obtained from the CT Department of Energy and Environmental Protection (CT DEEP) CT Department of Transportation (CT DOT) under ESRI Data & Maps and StreetMap for America.
Notes:
This map was produced for the CT Department of Transportation. The location of the boundaries and features on this map are approximate and are intended for planning purposes only. This map is not intended to be used for surveying, engineering or legal purposes.

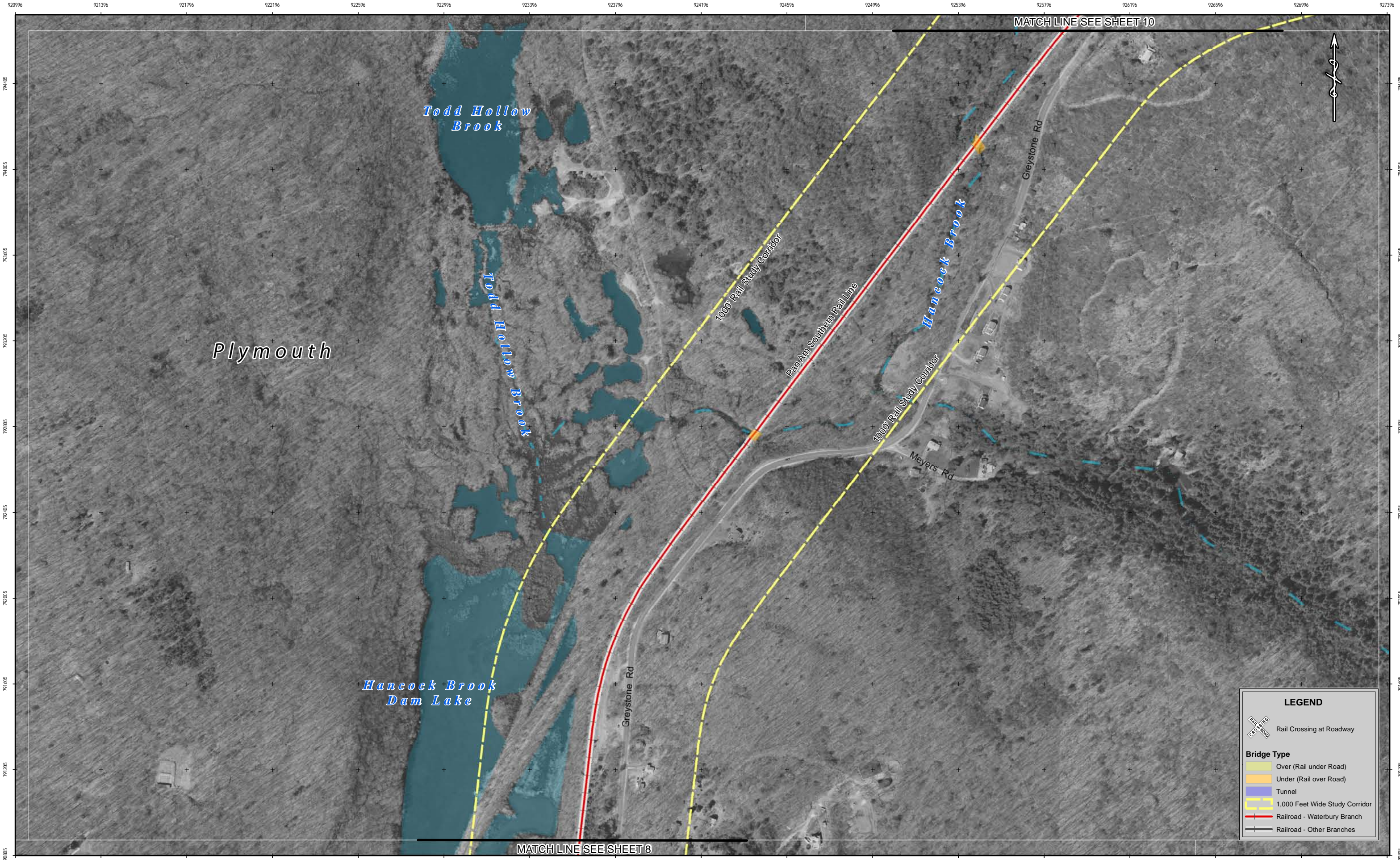
PROJECT TITLE:	Central Connecticut Rail Study (CCRS) CTDOT Project # 171-366	
PREPARED BY:	 URS CORPORATION AES Rocky Hill, CT	



STATE OF CONNECTICUT
DEPARTMENT OF TRANSPORTATION



TOWN(S):	Waterbury, Plymouth, Bristol, Plainville, New Britain, Berlin	PROJECT NO.:	171-366
MAP TITLE:	CENTRAL CONNECTICUT CORRIDOR	DATE:	09/2012
		SHEET NO.:	8 OF 26



LEGEND

RAIL/ROAD

Rail Crossing at Roadway

Bridge Type

Over (Rail under Road)

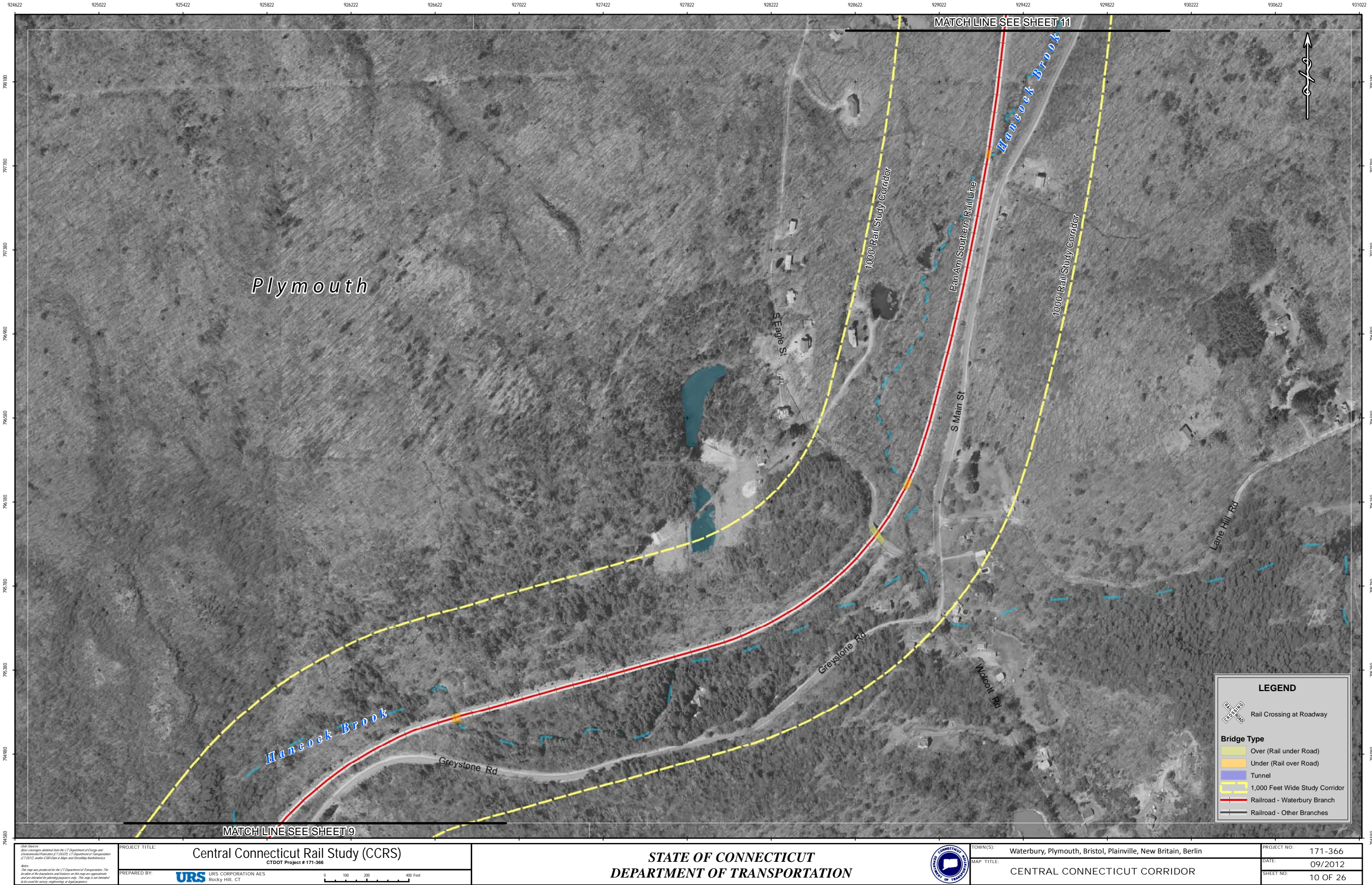
Under (Rail over Road)

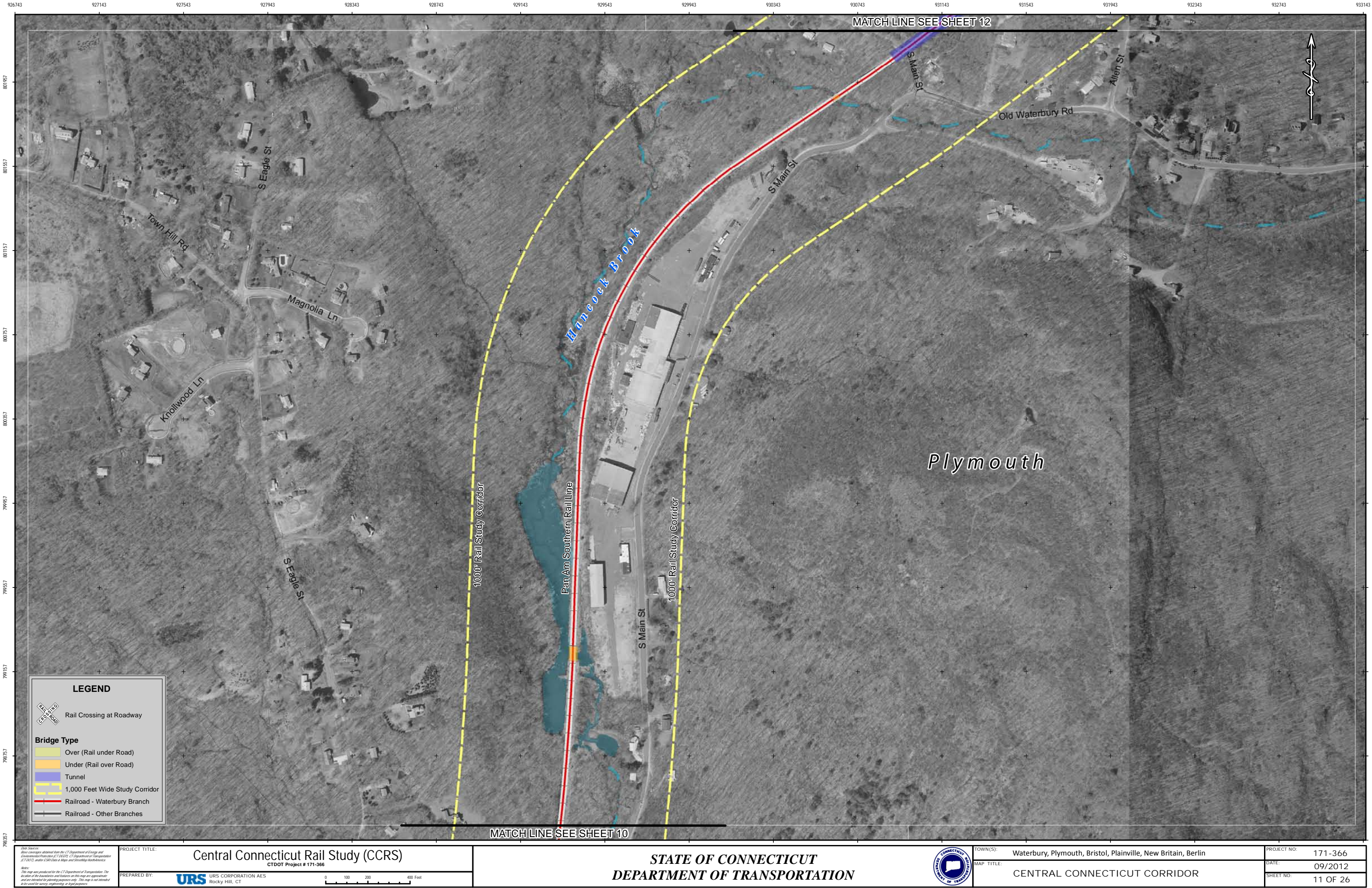
Tunnel

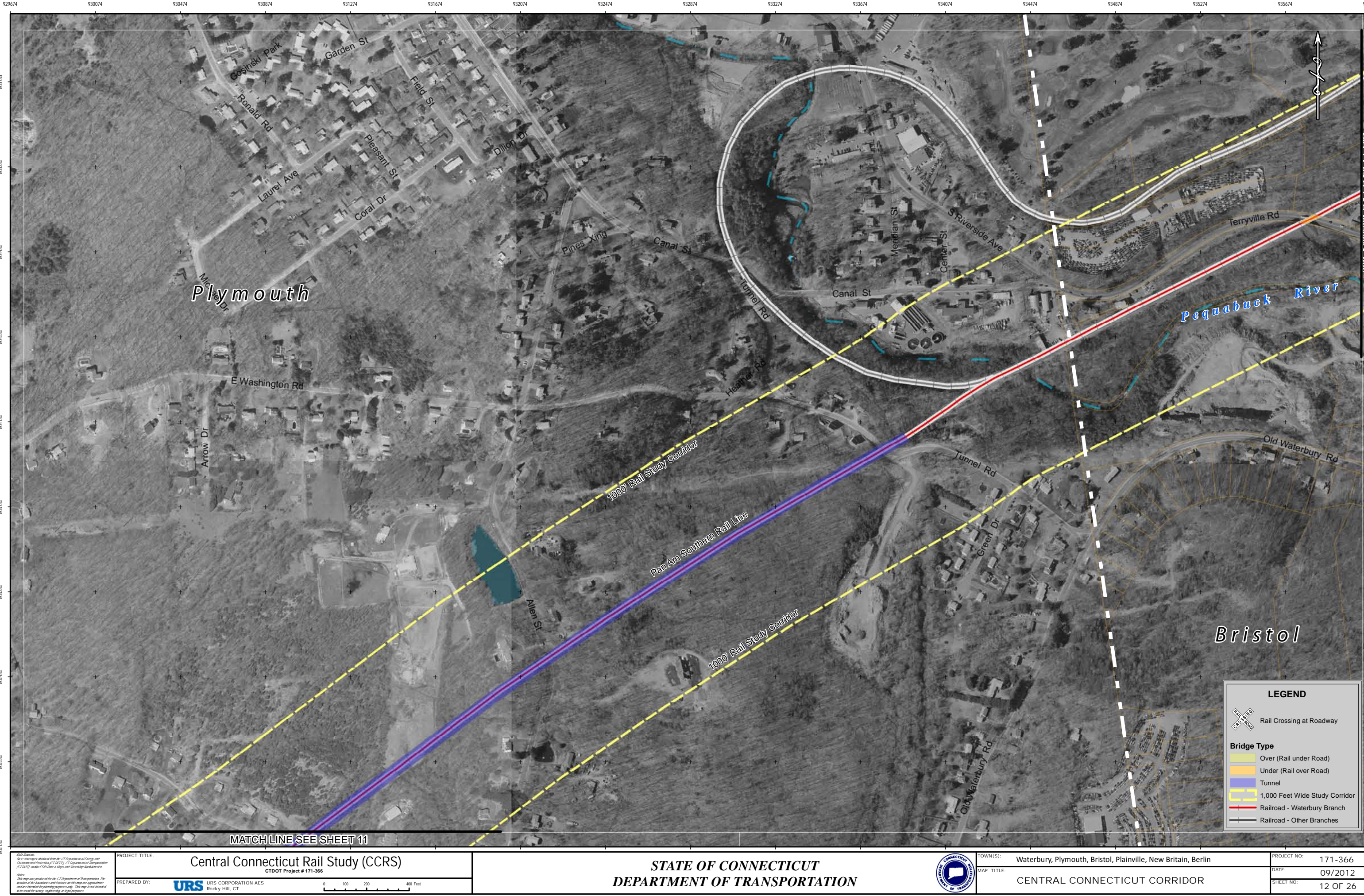
1,000 Feet Wide Study Corridor

Railroad - Waterbury Branch

Railroad - Other Branches







Data Sources:
Aerial coverage obtained from the CT Department of Energy and Environmental Protection (CT DEEP) CT Department of Transportation (CT DOT) under ESRI's Data & Maps and StreetMap North America.
Notes:
This map was produced for the CT Department of Transportation. The location of the boundaries and features on this map are approximate and are intended for planning purposes only. This map is not intended to be used for surveying, engineering or legal purposes.

PROJECT TITLE:	Central Connecticut Rail Study (CCRS) CTDOT Project # 171-366
PREPARED BY:	URS CORPORATION AES Rocky Hill, CT



STATE OF CONNECTICUT
DEPARTMENT OF TRANSPORTATION



TOWN(S):	Waterbury, Plymouth, Bristol, Plainville, New Britain, Berlin
MAP TITLE:	CENTRAL CONNECTICUT CORRIDOR

PROJECT NO:	171-366
DATE:	09/2012
SHEET NO:	12 OF 26



Rail Crossing at Roadway

BRIDGE

TYPE

Over (Rail under Road)

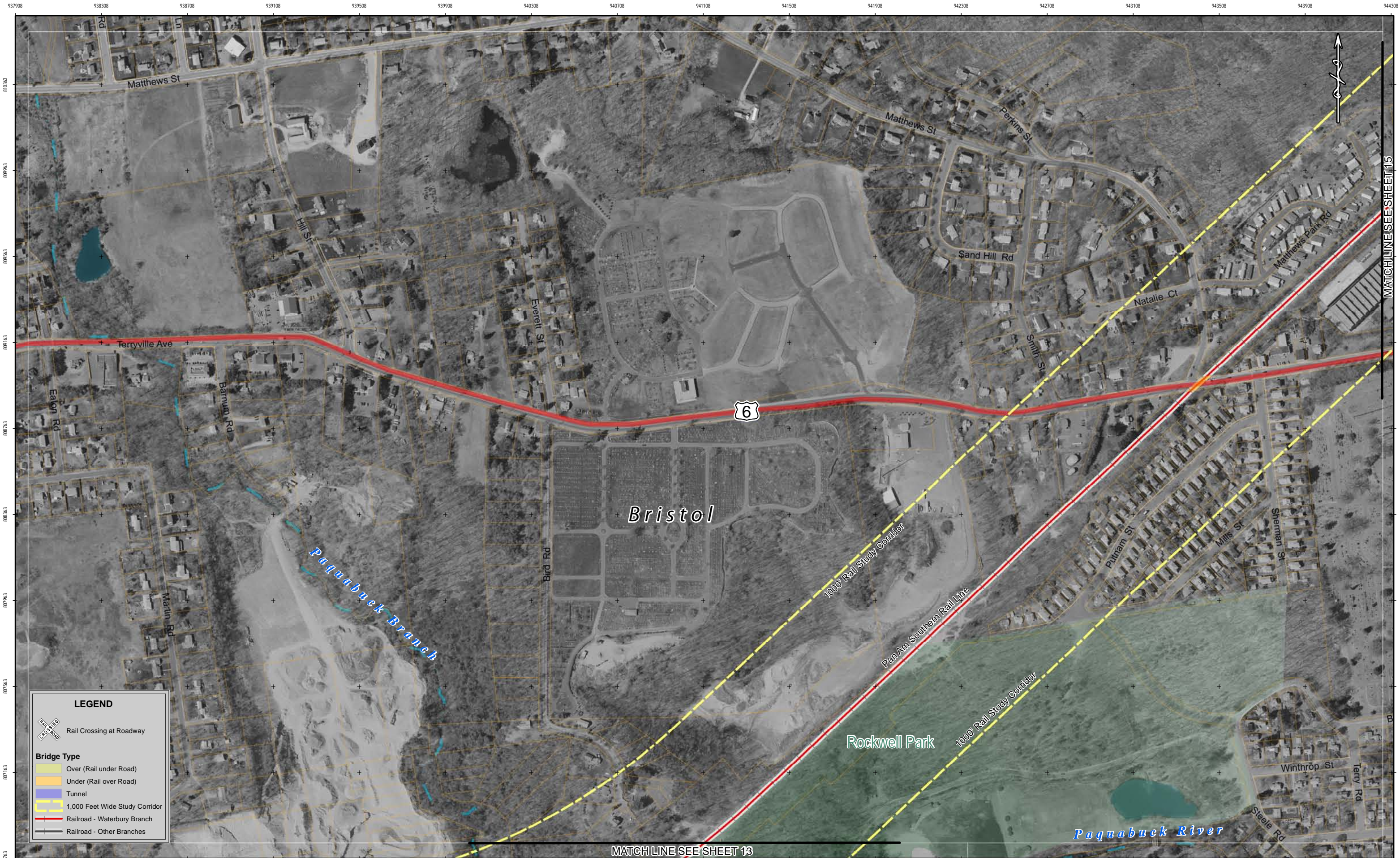
Under (Rail over Road)

Tunnel

1,000 Feet Wide Study Corridor

Railroad - Waterbury Branch

Railroad - Other Branches



Rail Crossing at Roadway

Bridge Type

Over (Rail under Road)

Under (Rail over Road)

Tunnel

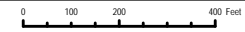
1,000 Feet Wide Study Corridor

Railroad - Waterbury Branch

Railroad - Other Branches

Map Sources:
Aerial coverages obtained from the CT Department of Energy and Environmental Protection (CTDEEP) CT Department of Transportation (CTDOT) under ESRI Data & Maps and StreetMap WorldGraphics.
Notes:
This map was produced for the CT Department of Transportation. The location of the boundaries and features on this map are approximate and are intended for planning purposes only. This map is not intended to be used for surveying, engineering or legal purposes.

PROJECT TITLE:	Central Connecticut Rail Study (CCRS) CTDOT Project # 171-366	
PREPARED BY:	<div><div>URS</div><div>URS CORPORATION AES Rocky Hill, CT</div></div>	



STATE OF CONNECTICUT
DEPARTMENT OF TRANSPORTATION




TOWN(S):	Waterbury, Plymouth, Bristol, Plainville, New Britain, Berlin	PROJECT NO.:	171-366
MAP TITLE:	CENTRAL CONNECTICUT CORRIDOR	DATE:	09/2012
		SHEET NO.:	14 OF 26



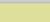
MATCH LINE SEE SHEET 14


MATCH LINE SEE SHEET 16


LEGEND

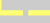

Rail Crossing at Roadway


Bridge Type

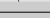
 Over (Rail under Road)

 Under (Rail over Road)

 Tunnel

 1,000 Feet Wide Study Corridor

 Railroad - Waterbury Branch


 Railroad - Other Branches

Map Sources:
Aerial coverage obtained from the CT Department of Energy and Environmental Protection (CTDEEP) CT Department of Transportation (CTDOT) under ESRI Data & Maps and StreetView Imagery.

Notes:
This map was produced for the CT Department of Transportation. The location of the boundaries and features on this map are approximate and are intended for planning purposes only. This map is not intended to be used for surveying, engineering or legal purposes.

PROJECT TITLE:
Central Connecticut Rail Study (CCRS)
CTDOT Project # 171-366

PREPARED BY:
URS URS CORPORATION AES
Rocky Hill, CT

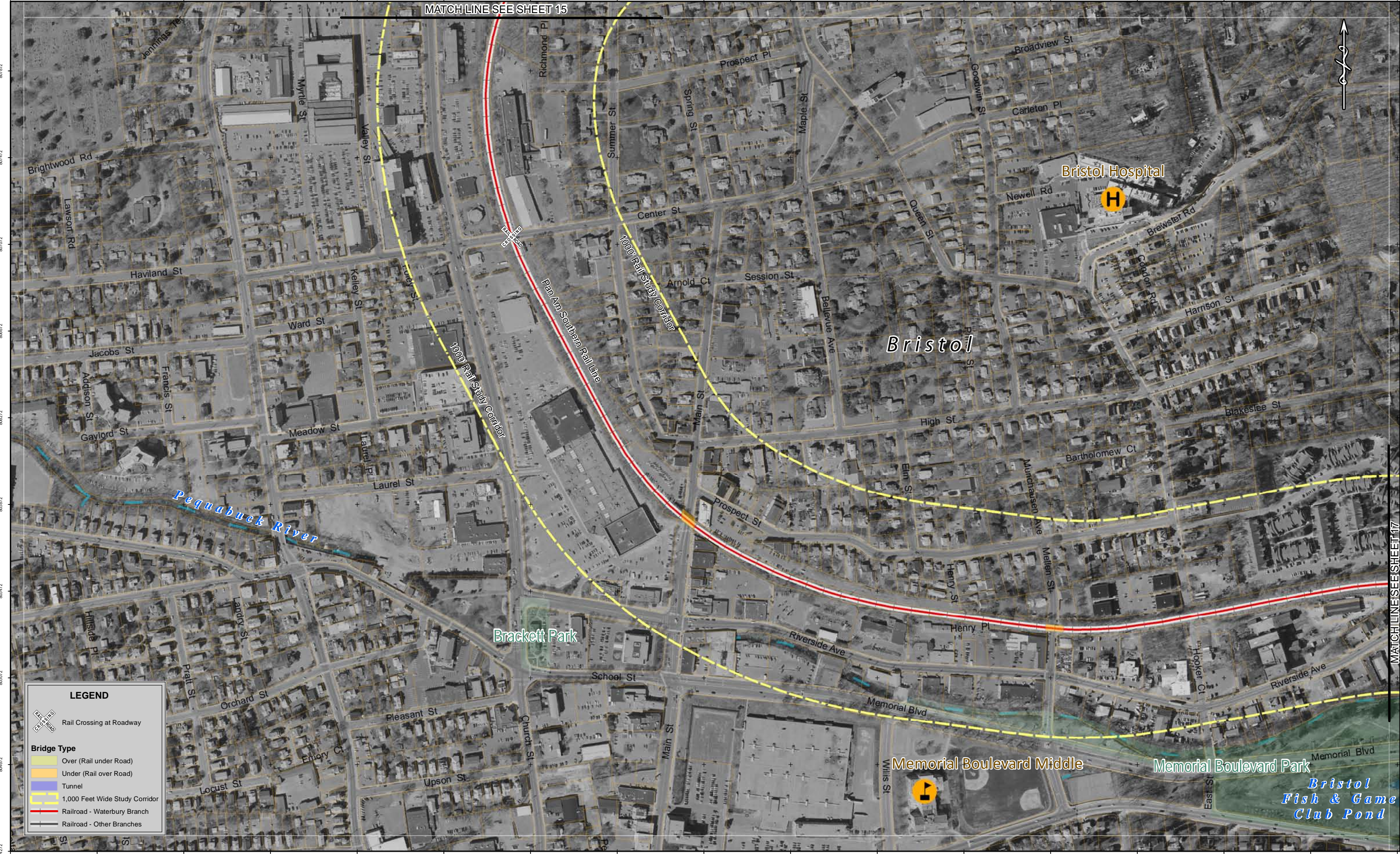

0 100 200 400 Feet

STATE OF CONNECTICUT
DEPARTMENT OF TRANSPORTATION



TOWN(S):	Waterbury, Plymouth, Bristol, Plainville, New Britain, Berlin
MAP TITLE:	CENTRAL CONNECTICUT CORRIDOR

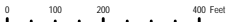
PROJECT NO:	171-366
DATE:	09/2012
SHEET NO:	15 OF 26



Map Sources:
Aerial coverages obtained from the CT Department of Energy and Environmental Protection (CTDEEP) CT Department of Transportation (CTDOT) under ESRI Data & Maps and StreetMap for America.

Notes:
This map was produced for the CT Department of Transportation. The location of the boundaries and features on this map are approximate and are intended for planning purposes only. This map is not intended to be used for surveying, engineering or legal purposes.

PROJECT TITLE:	Central Connecticut Rail Study (CCRS) CTDOT Project # 171-366	
PREPARED BY:	 URS CORPORATION AES Rocky Hill, CT	



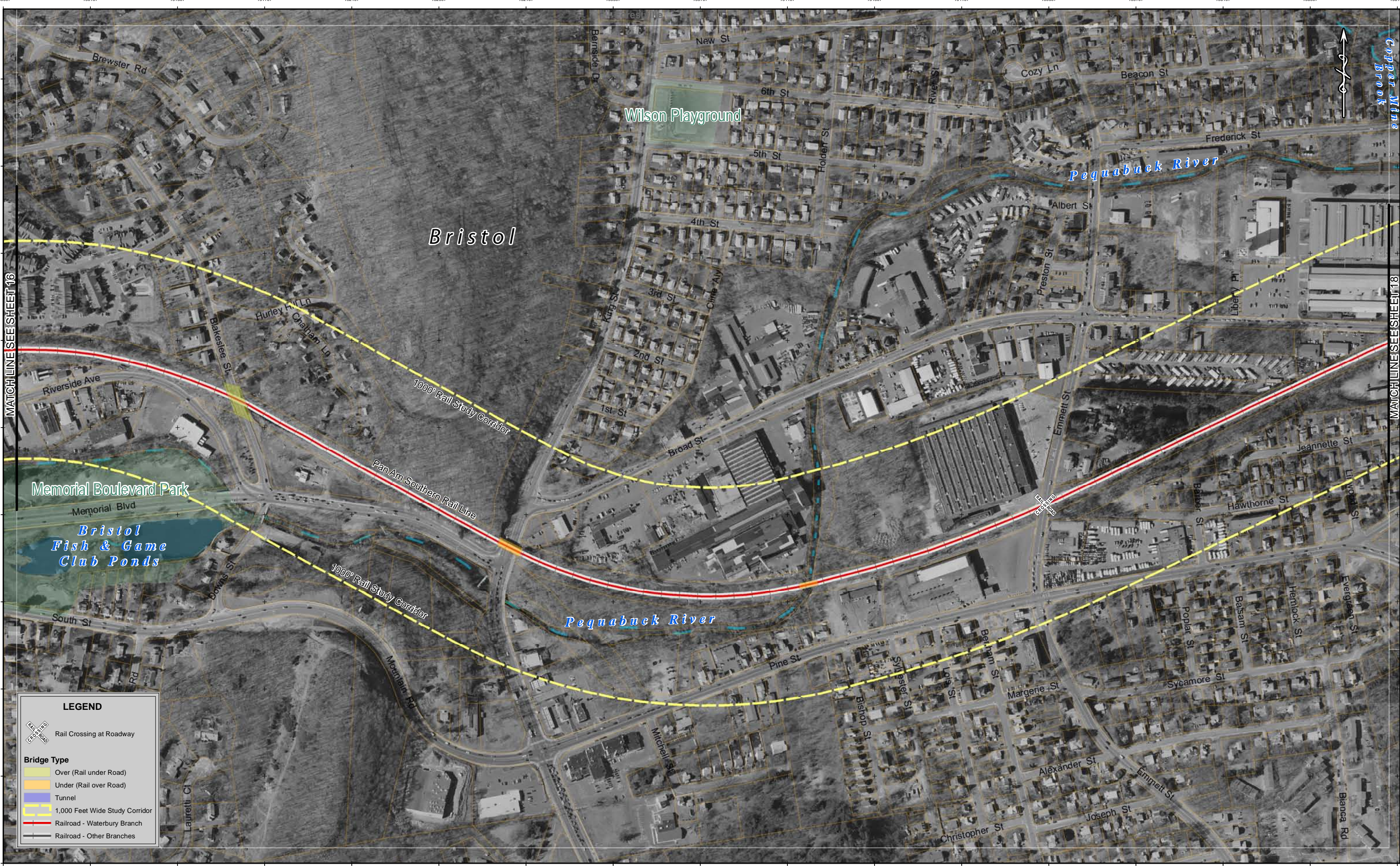
STATE OF CONNECTICUT
DEPARTMENT OF TRANSPORTATION



TOWN(S):	Waterbury, Plymouth, Bristol, Plainville, New Britain, Berlin
MAP TITLE:	CENTRAL CONNECTICUT CORRIDOR

PROJECT NO:	171-366
DATE:	09/2012
SHEET NO:	16 OF 26

950507 950907 951307 951707 952107 952507 952907 953307 953707 954107 954507 954907 955307 955707 956107 956507 956907



LEGEND

Rail Crossing at Roadway

Bridge Type

Over (Rail under Road)

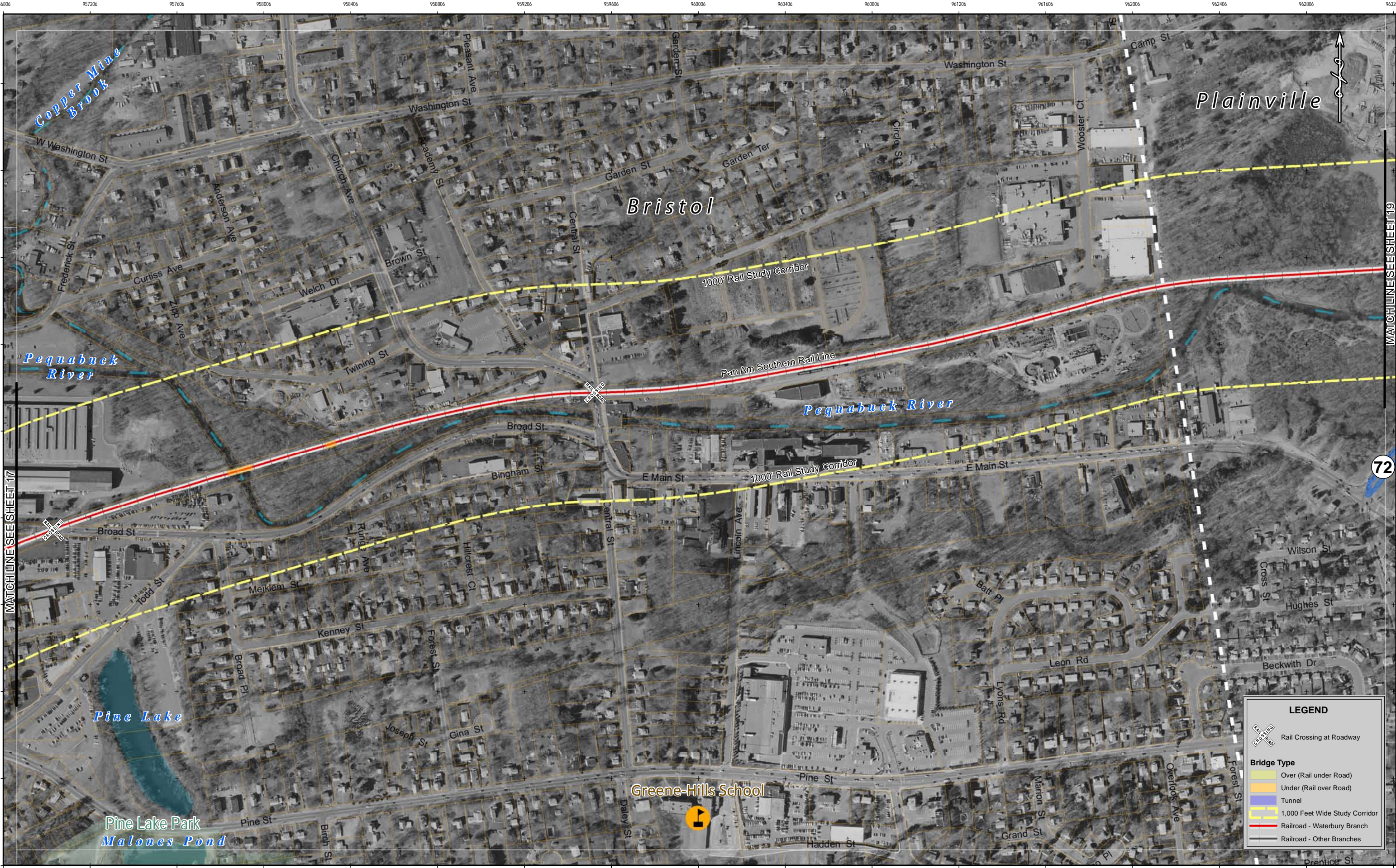
Under (Rail over Road)

Tunnel

1,000 Feet Wide Study Corridor

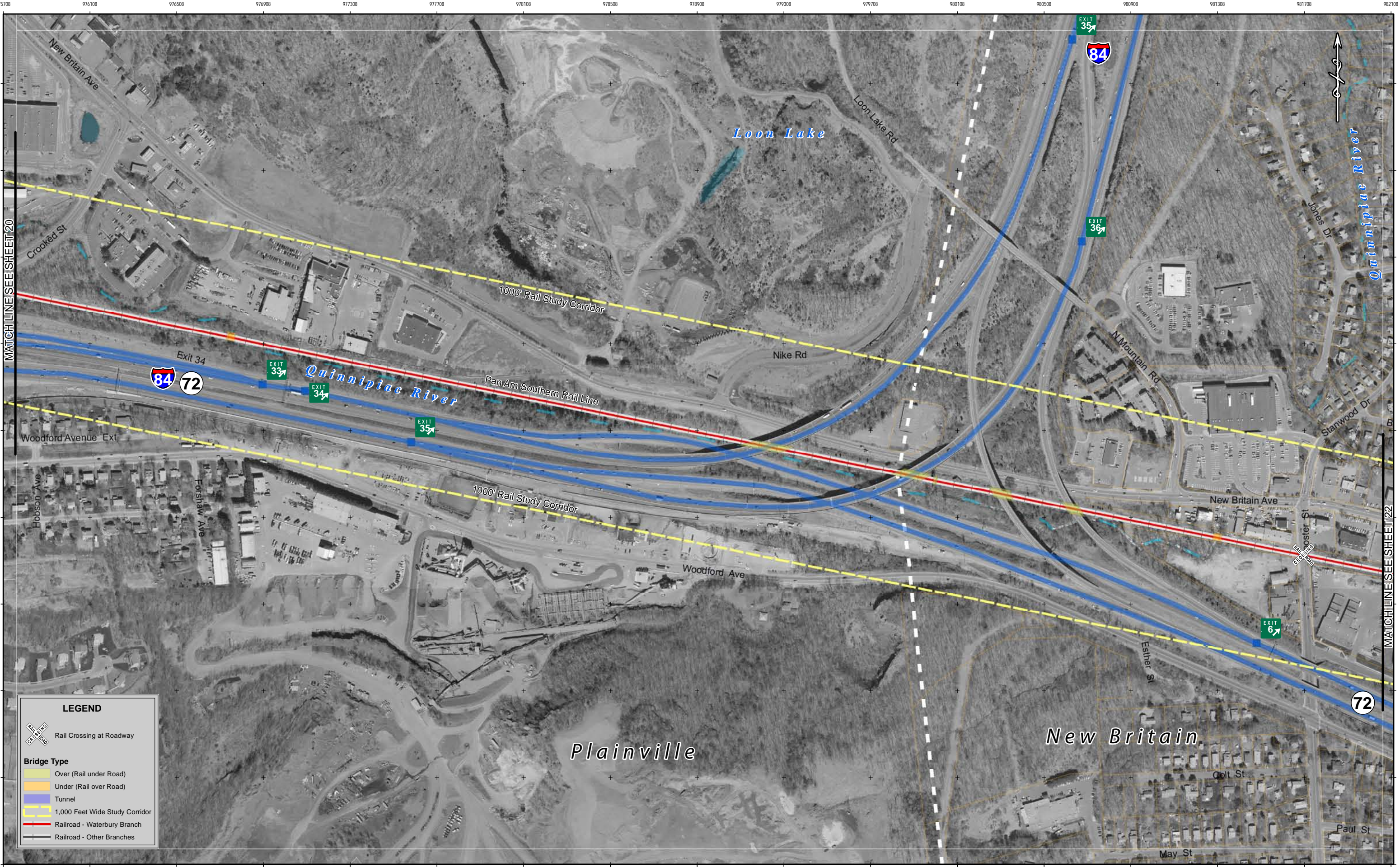
Railroad - Waterbury Branch

Railroad - Other Branches









LEGEND

Rail Crossing at Roadway

Bridge Type

Over (Rail under Road)

Under (Rail over Road)

Tunnel

1,000 Feet Wide Study Corridor

Railroad - Waterbury Branch

Railroad - Other Branches

982008 982408 982808 983208 983608 984008 984408 984808 985208 985608 986008 986408 986808 987208 987608 988008 988408



991112 991512 991912 992312 992712 993112 993512 993912 994312 994712 995112 995512 995912 996312 996712 997112 997512

MATCH LINE SEE SHEET 23


Saint Thomas Aquinas High

Northend Elementary School

New Britain

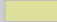
MATCH LINE SEE SHEET 25

LEGEND




Rail Crossing at Roadway


Bridge Type




Over (Rail under Road)




Under (Rail over Road)



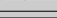
Tunnel



1,000 Feet Wide Study Corridor




Railroad - Waterbury Branch



Railroad - Other Branches

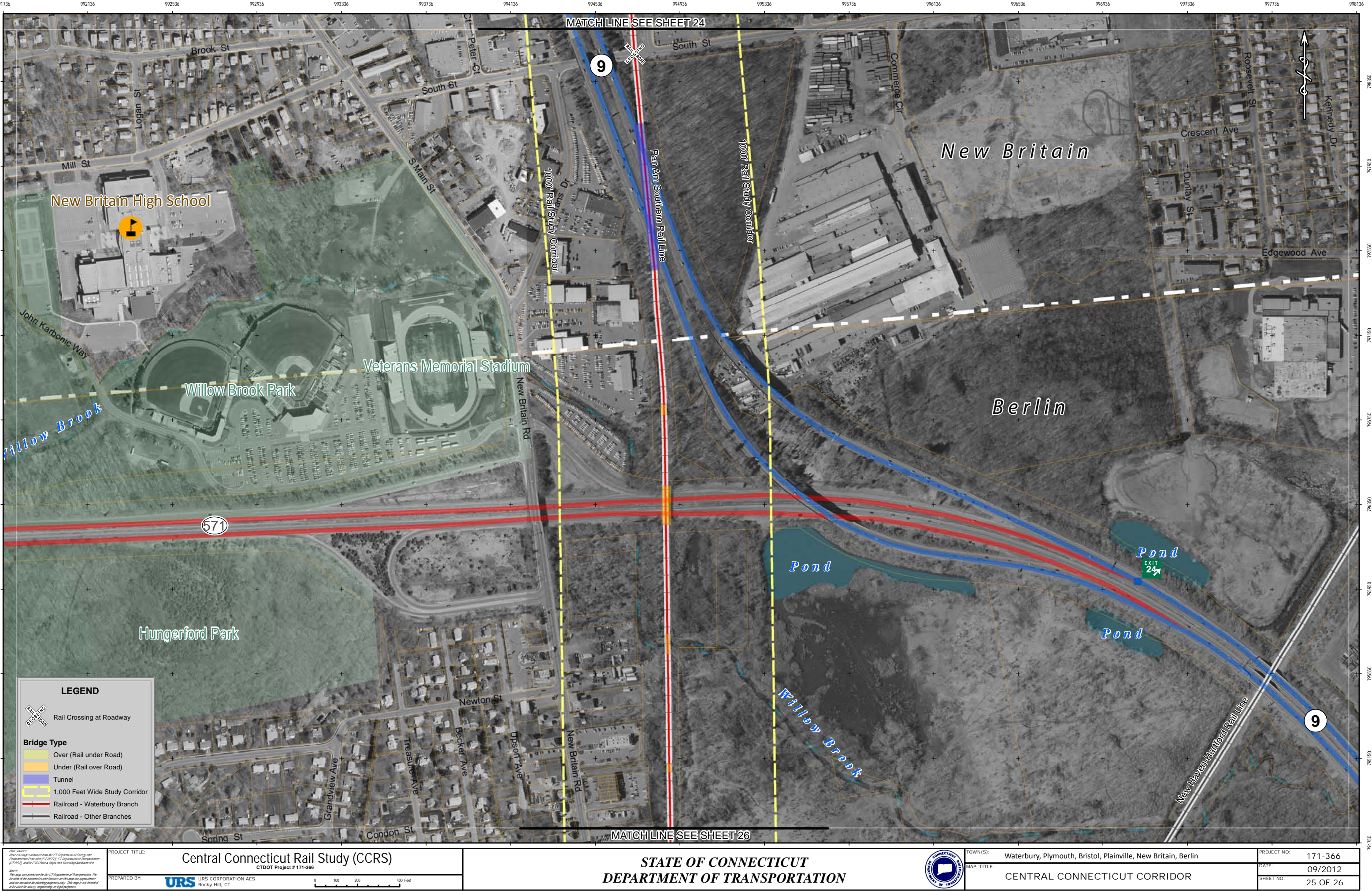
Map Sources:
Aerial coverages obtained from the CT Department of Energy and Environmental Protection (CTDEEP) CT Department of Transportation (CTDOT) under ESRI Data & Maps and StreetMap North America.

Notes:
This map was produced for the CT Department of Transportation. The location of the boundaries and features on this map are approximate and are intended for planning purposes only. This map is not intended to be used for surveying, engineering or legal purposes.

PROJECT TITLE:	Central Connecticut Rail Study (CCRS) CTDOT Project # 171-366	
PREPARED BY:	 URS CORPORATION AES Rocky Hill, CT	

STATE OF CONNECTICUT
DEPARTMENT OF TRANSPORTATION

TOWN(S):	Waterbury, Plymouth, Bristol, Plainville, New Britain, Berlin	PROJECT NO:	171-366
MAP TITLE:	CENTRAL CONNECTICUT CORRIDOR	DATE:	09/2012
		SHEET NO:	24 OF 26



Map Sources:
Aerial coverages obtained from the CT Department of Energy and Environmental Protection (CTDEEP) CT Department of Transportation (CTDOT) under ESRI Data & Maps and StreetMap North America.

Notes:
This map was produced for the CT Department of Transportation. The location of the boundaries and features on this map are approximate and are intended for planning purposes only. This map is not intended to be used for surveying, engineering or legal purposes.

PROJECT TITLE:	Central Connecticut Rail Study (CCRS)	
	CTDOT Project # 171-366	
PREPARED BY:	URS URS CORPORATION AES Rocky Hill, CT	



STATE OF CONNECTICUT
DEPARTMENT OF TRANSPORTATION




TOWN(S):	Waterbury, Plymouth, Bristol, Plainville, New Britain, Berlin	PROJECT NO.:	171-366
MAP TITLE:	CENTRAL CONNECTICUT CORRIDOR	DATE:	09/2012
		SHEET NO.:	25 OF 26

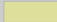
992236 992636 993036 993436 993836 994236 994636 995036 995436 995836 996236 996636 997036 997436 997836 998236 998636





LEGEND


 Rail Crossing at Roadway


Bridge Type

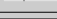
 Over (Rail under Road)

 Under (Rail over Road)

 Tunnel

 1,000 Feet Wide Study Corridor

 Railroad - Waterbury Branch

 Railroad - Other Branches

Map Sources:
Aerial coverages obtained from the CT Department of Energy and Environmental Protection (CT DEEP) CT Department of Transportation (CT DOT) under ESRI Data & Maps and StreetMap for Business.

Notes:
This map was produced for the CT Department of Transportation. The location of the boundaries and features on this map are approximate and are intended for planning purposes only. This map is not intended to be used for surveying, engineering or legal purposes.

PROJECT TITLE:

Central Connecticut Rail Study (CCRS)
CTDOT Project # 171-366

PREPARED BY:

 URS CORPORATION AES
Rocky Hill, CT



STATE OF CONNECTICUT
DEPARTMENT OF TRANSPORTATION



TOWN(S):	Waterbury, Plymouth, Bristol, Plainville, New Britain, Berlin	PROJECT NO.:	171-366
MAP TITLE:	CENTRAL CONNECTICUT CORRIDOR	DATE:	09/2012
		SHEET NO.:	26 OF 26